

JOIN THE LARGEST EDUCATIONAL AND NETWORKING EVENT FOR THOSE INVOLVED IN THE INTERDISCIPLINARY FIELD OF BIOPHYSICS.

You are invited to exhibit at the Biophysical Society 69th Annual Meeting. The Biophysical Society offers you the opportunity to learn from top researchers, explore new research, contact key buyers, and increase your visibility at a meeting that represents more than 50 unique international markets.

Connect Face-To-Face With Over 5,000 Top Scientists In The Global Biophysics Community.

Los Angeles Convention Center ▪ Los Angeles, California, USA
February 15–19, 2025 ▪ Exhibit Dates: February 16–18, 2025



THE BIOPHYSICS COMMUNITY WILL BE SEARCHING FOR YOUR PRODUCTS AND SERVICES IN THESE SPECIALIZED RESEARCH AREAS:

- Bioengineering
- Cancer & Disease Research
- Cell Biology
- Computational Biology & Chemistry
- CRISPR/Cas9
- Electrophysiology
- Fluorescence & Spectroscopy
- Imaging & Optical Microscopy
- Mechanobiology of Protein & Cells
- Molecular Biology
- Neuroscience
- Physiology
- Spectroscopy
- Structural Biology
- Super Resolution Microscopy
- Systems Biology

OUR 5,000+ ATTENDEES ARE LOOKING FOR PRODUCTS AND SERVICES IN:

- Biochemical Reagents
- Biotechnology
- Books & Journals
- Cameras
- Cell Biology Products
- Cryo-EM
- Crystallography
- Drug Discovery
- Electrophysiology
- Fluorescence
- High-Throughput Instrumentation Imaging
- Ion Channels
- Laboratory Apparatus & Equipment
- Life Sciences
- Lipids
- Microscopy
- Proteins
- Screening
- Spectroscopy

2025 BPS Lecturer



Eric Gouaux
Vollum Institute
Oregon Health and Science University
Howard Hughes Medical Institute

From Clamshells to Clefts: The Molecular Basis of Synaptic Transmission

OVER 5,000 ATTENDEES

MORE THAN 4,000 ABSTRACT SUBMISSIONS

600 POSTER PRESENTATIONS DAILY

110 SCIENTIFIC SESSIONS

WHO ARE BPS MEMBERS?

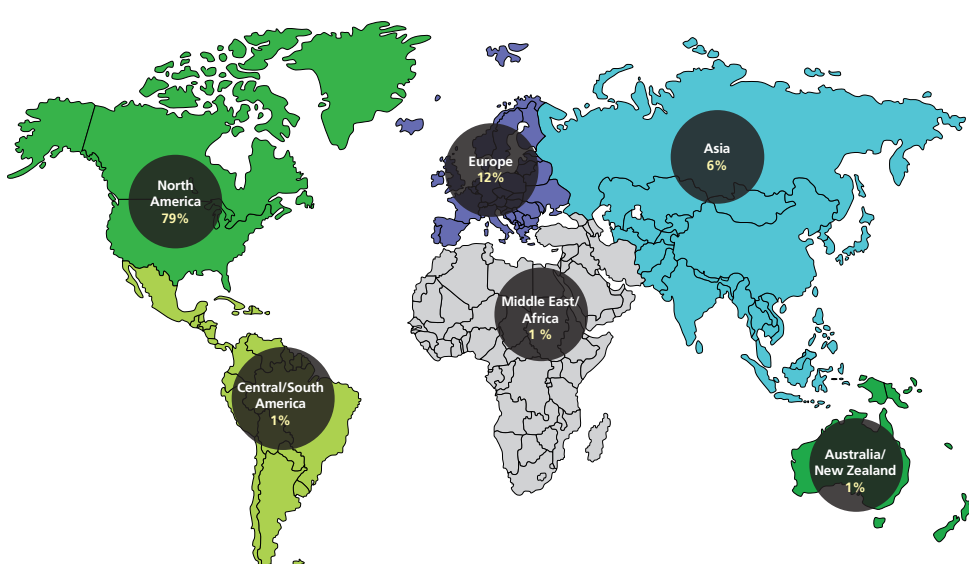
7,000+ members, with around **30%** of our membership residing outside of the United States

64% have a PhD, MD, or both

92% have an academic university as their professional focus

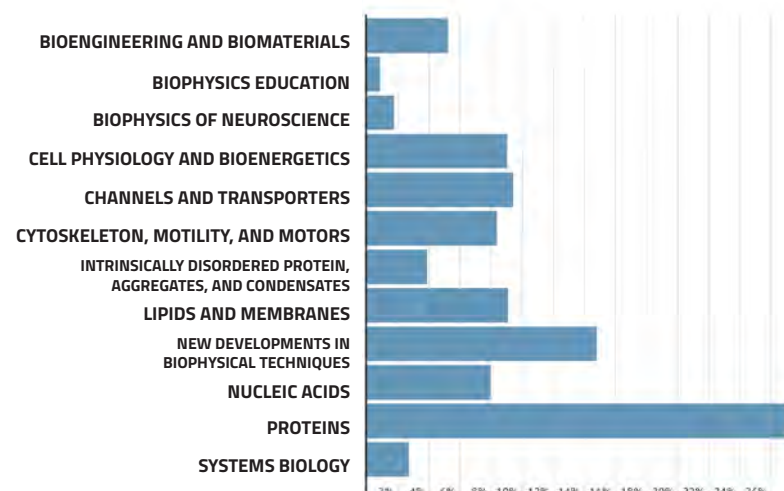
ATTENDEE DEMOGRAPHICS

Buying Power Concentration



Research Areas

Professionals conducting research in these fields of biophysics attend the Annual Meeting.



FOR MORE INFORMATION OR TO RESERVE YOUR BOOTH, CONTACT:

Ally Levine, CMP, Senior Sales & Exhibits Manager
240-290-5609 ▪ exhibits@biophysics.org

EXHIBITOR INFORMATION

Venue

Los Angeles Convention Center
1201 S Figueroa Street
Los Angeles, CA 90015

Exhibit Space Rates

Inline (per 10'x10')	\$3,050
Corner Fee	\$350

Exhibit Dates And Hours

Sunday, February 16	10:00 AM-5:00 PM
Monday, February 17	10:00 AM-5:00 PM
Tuesday, February 18	10:00 AM-4:00 PM

*Hours are subject to change

What's Included

- Pipe and drape booth structure for contracted exhibit space
- Identification sign with company name and booth number
- Six complimentary exhibitor badges per 10'x10' of contracted exhibit space
- One complimentary scientific meeting registration as designated
 - 100 sq. ft. – 300 sq. ft. one complimentary scientific badge
 - 400 sq. ft. – 600 sq. ft. two complimentary scientific badges
 - 700 sq. ft. + three complimentary scientific badges

ABOUT BPS

Biophysics is one of the fastest growing scientific disciplines, bringing together cell biology, physics, chemistry, biomedical engineering, and a myriad of other research areas to understand biological phenomenon. Biophysicists study life at every level, from atoms and molecules to cells, organisms, and environments. As innovations come out of physics and biology labs, biophysicists find new areas to explore where they can apply their expertise, create new tools, and understand the mechanics of biology. Biophysicists always aim to find out how biological systems work.

The Biophysical Society was founded in 1958 to lead the development and dissemination of knowledge in biophysics. It does so through its many programs, including its meetings, publications, and committee outreach activities. The Society's members, now over 7,000, work in academia, industry, and in government agencies throughout the world.

The Society publishes the *Biophysical Journal*, *Biophysical Reports*, and *The Biophysicist*, which is accessible online to all members as a benefit of membership. Furthermore, various Annual Meeting publications, a monthly Society Newsletter, and a Directory of Members, are also made available to members.

Exhibitor Rewards Program

BPS has an Exhibitor Rewards Program where returning exhibiting companies earn points to increase their ranking when selecting booth space each year. Total points will be added to the previous point total each year.

Points are earned based on the dollar amount spent for each year a company purchases exhibit space, sponsorship, and advertising since 2014.

The Priority Point system is calculated by totaling all points earned by each company. Companies are ranked by their total points since 2014 and scheduled to choose booth space for the next Annual Meeting year by groups. Priority Points will be calculated for the company name listed on the exhibitor contract only. Priority Point history will be forfeited after missing three consecutive years of exhibiting.

FIND OUT
WHAT DRAWS
ATTENDEES
TO OUR
EXHIBIT HALL

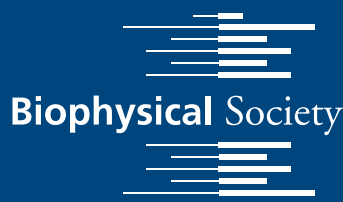


ADVERTISING AND SUPPORT OPPORTUNITIES

BPS provides an extensive list of Advertising and Support Opportunities that meet every budget. Create brand awareness and make sure attendees know you will be there in Los Angeles.

Visit www.biophysics.org/2025meeting/exhibits to view opportunities.

The Biophysical Society Annual Meeting is the world's leading educational and networking event for scientists working in the interdisciplinary field of biophysics!



5515 Security Lane, Suite 1110
Rockville, MD 20852
www.biophysics.org

IMPORTANT DATES

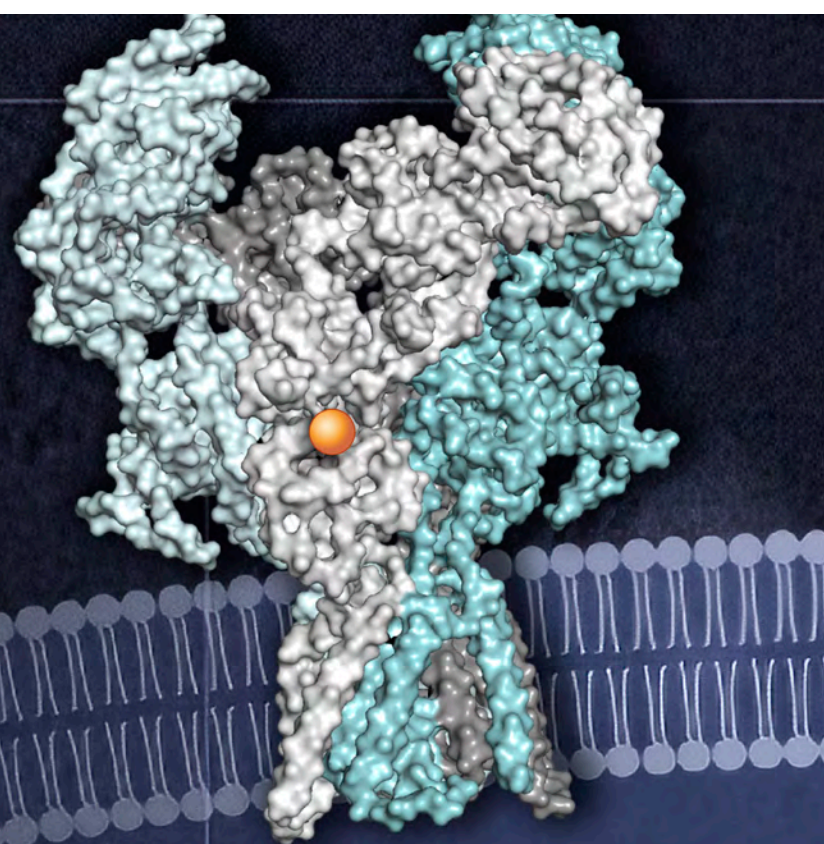
July 1	Support and advertising opportunities available
July 1	Annual Meeting abstract submission and attendee registration opens
October 2	Exhibitor registration opens
November 12	Exhibitor Service Kit, Insurance Kit, and Social Media Kit available
November 12	Exhibitor Presentation Summary for inclusion in Daily Schedule
December 16	Company descriptions, product categories, and ads due for inclusion in Daily Schedule
January 31	Certificate of Insurance for all exhibiting companies due
February 7	Exhibitor registration closes (after this date, must register onsite)

For more information, contact

Ally Levine, CMP, Senior Sales & Exhibits Manager
240-290-5609
exhibits@biophysics.org
<https://www.biophysics.org/2025meeting/exhibits>

BIOPHYSICAL SOCIETY 69TH ANNUAL MEETING • FEBRUARY 15–19, 2025 • EXHIBIT DATES: FEBRUARY 16–18, 2025
LOS ANGELES CONVENTION CENTER • LOS ANGELES, CALIFORNIA, USA

BPS 2025
los angeles
February 15–19, 2025 **california**



EXHIBITOR PROSPECTUS